



DISK-1 Features

- 1 in. outside diameter
- Mylar film construction
- 32 to 5,000 CPR
- Index track option
- Compatible with US Digital's EM1 and EM2 encoder modules



DISK-1 Product Description

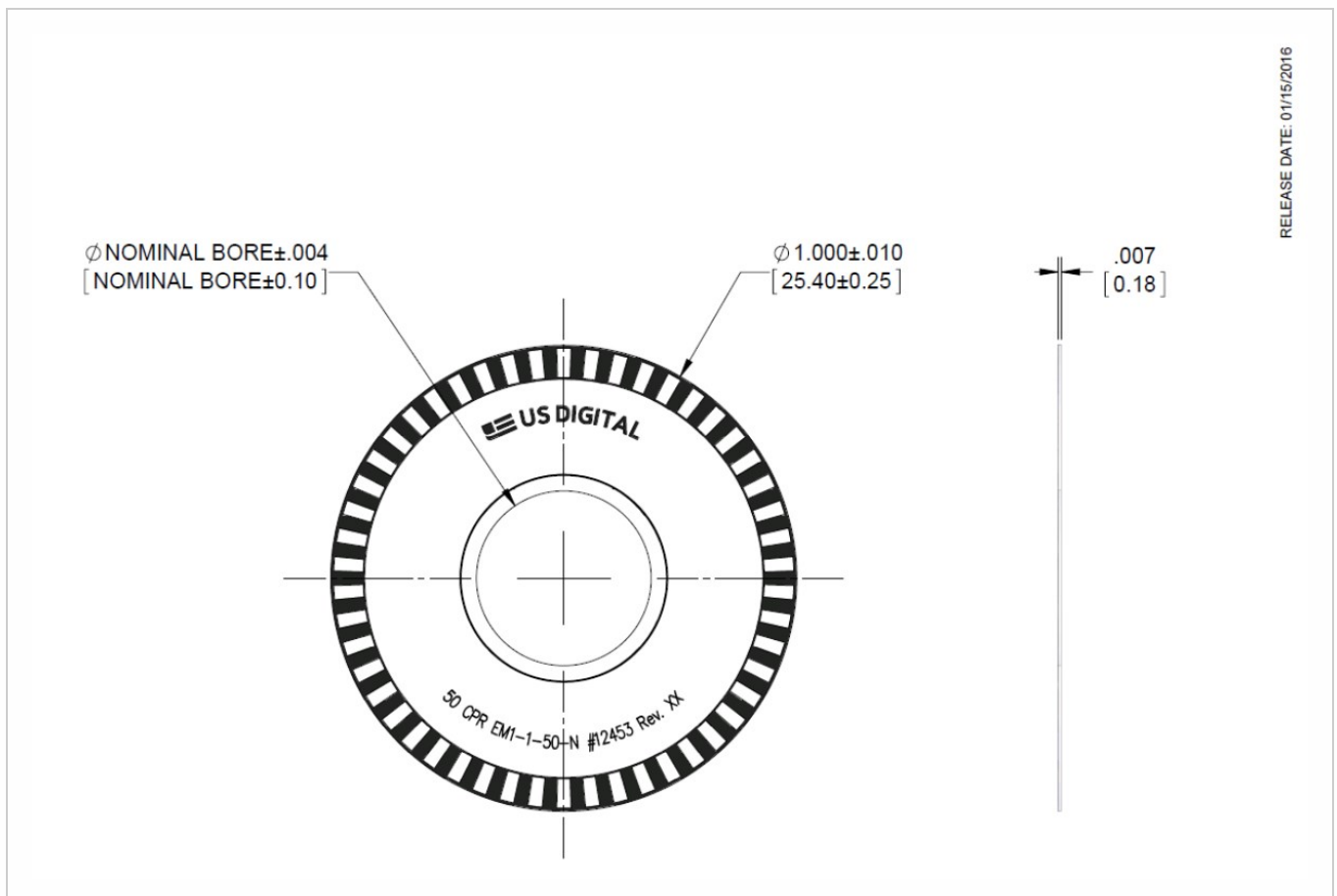
US Digital offers a wide variety of standard rotary encoder disks. They may be ordered as a stand-alone disk or as a hub disk. These rotary encoder disks are made from Mylar polyester film. This material allows for a wide temperature range.



The 32 CPR is available only in the *No Index, EM1 Compatible option (NE)*. Other resolutions are available with or without an index track.

Mechanical alignment drawings for optical encoder rotary disks and optical encoder modules are available (see the EM1 (<https://www.usdigital.com/products/encoders/incremental/modules/em1/>) and EM2 (<https://www.usdigital.com/products/encoders/incremental/modules/em2/>) pages).

Mechanical Drawings





Specifications

SPECIFICATIONS

Inside Diameter (ID) tolerance	±0.004"
Outside Diameter (OD)	1" ± 0.010 in.
Thickness	0.007"
Temperature Range	-40C to 100C



COMPATIBLE ENCODER MODULES

CPR	1" DISK Non-Index	MODULE Non-Index	1" DISK Index	MODULE Index
32	DISK-1-32-*-NE	EM1-1-32-N		
50	DISK-1-50-*-NE	EM1-1-50-N	DISK-1-50-*-IE	EM1-1-50-I
96	DISK-1-96-*-NE	EM1-1-100-N	DISK-1-96-*-IE	EM1-1-100-I
100	DISK-1-100-*-NE	EM1-1-100-N	DISK-1-100-*-IE	EM1-1-100-I
120	DISK-1-120-*-NE	EM1-1-100-N		
200	DISK-1-200-*-NE	EM1-1-200-N	DISK-1-200-*-IE	EM1-1-200-I
192	DISK-1-192-*-NE	EM1-1-200-N	DISK-1-192-*-IE	EM1-1-200-I
250	DISK-1-250-*-NE	EM1-1-250-N	DISK-1-250-*-IE	EM1-1-250-I
256	DISK-1-256-*-NE	EM1-1-250-N	DISK-1-256-*-IE	EM1-1-250-I
360	DISK-1-360-*-NE	EM1-1-360-N	DISK-1-360-*-IE	EM1-1-360-I
400	DISK-1-400-*-NE	EM1-1-400-N	DISK-1-400-*-IE	EM1-1-400-I
500	DISK-1-500-*-NE	EM1-1-500-N	DISK-1-500-*-IE	EM1-1-500-I
512	DISK-1-512-*-NE	EM1-1-512-N	DISK-1-512-*-IE	EM1-1-512-I
540	DISK-1-540-*-NE	EM1-1-540-N	DISK-1-540-*-IE	EM1-1-540-I
720	DISK-1-720-*-NE	EM1-1-720-N	DISK-1-720-*-IE	EM1-1-720-I
800	DISK-1-800-*-NE	EM1-1-800-N	DISK-1-800-*-IE	EM1-1-800-I
900	DISK-1-900-*-NE	EM1-1-900-N	DISK-1-900-*-IE	EM1-1-900-I
1000	DISK-1-1000-*-NE	EM1-1-1000-N	DISK-1-1000-*-IE	EM1-1-1000-I
1024	DISK-1-1024-*-NE	EM1-1-1024-N	DISK-1-1024-*-IE	EM1-1-1024-I
1250	DISK-1-1250-*-NE	EM1-1-1250-N	DISK-1-1250-*-IE	EM1-1-1250-I
2000			DISK-1-2000-*-IE	EM2-1-2000-I
2048			DISK-1-2048-*-IE	EM2-1-2048-I
2500			DISK-1-2500-*-IE	EM2-1-2500-I
4000			DISK-1-4000-*-IE	EM2-1-4000-I
4096			DISK-1-4096-*-IE	EM2-1-4096-I
5000			DISK-1-5000-*-IE	EM2-1-5000-I

*Represents the bore size

Notes



DISK-1 1 in. Transmissive Rotary Encoder Disk

- US Digital® warrants its products against defects in materials and workmanship for two years. See complete warranty (<https://www.usdigital.com/company/warranty>) for details.

Configuration Options

DISK-1	CPR (Cycles Per Revolution)	Disk ID	Index
	32	093 (0.093")	IE (Index)
	50	125 (0.125")	I (Index)
	96	375 (0.375")	NE (Non-Index)
	100	441 (0.441")	
	120		
	192		
	200		
	250		
	256		
	360		
	400		
	500		
	512		
	540		
	720		
	800		
	900		
	1000		
	1024		
	1250		
	2000		
	2048		
	2500		
	4000		
	4096		
	5000		

PLEASE NOTE: This chart is for informational use only. Certain product configuration combinations are not available. Visit the DISK-1 product page (<https://www.usdigital.com/products/DISK-1>) for pricing and additional information.